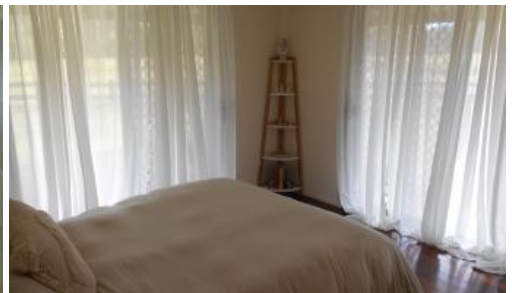




Sandy Creek



A MUST SEE!!! OUTSTANDING 43 ACRES SANDY CREEK

Low set 3 bedroom home, open plan kitchen, dining and lounge. 1 bathroom, separate toilet and large laundry. Wide verandas on three sides and attached carport.

Other improvements include a 20m x 10m zinc shed with 30m x 6m skillion, 3 phase power, concrete floor and self contained granny flat, 6m x 6m zinc shed with power and concrete floor, yards, loading ramp and vet crush, fenced into 4 paddocks. Water is supplied by a bore and sandy creek frontage and a small dam, also underground mains with 5 hydrants. The property has a 17ha irrigation licence.

The above information provided has been furnished to us by the vendor/s. We have not verified whether or not that information is accurate and do not have any belief in one way or the other in its accuracy. We do not accept any responsibility to any person for its accuracy and do no more than pass it on. All interested parties should make and rely upon their own inquiries in order to determine whether or not this information is in fact accurate.

3 1 8 43.00 ac

Price	SOLD
Property Type	Residential
Property ID	968
Land Area	43.00 ac

AGENT DETAILS

Garry Brown - 0418 783 288

OFFICE DETAILS

Woodford Livestock & Property
121 Archer Street Woodford QLD 4514
Australia
07 5496 1203

